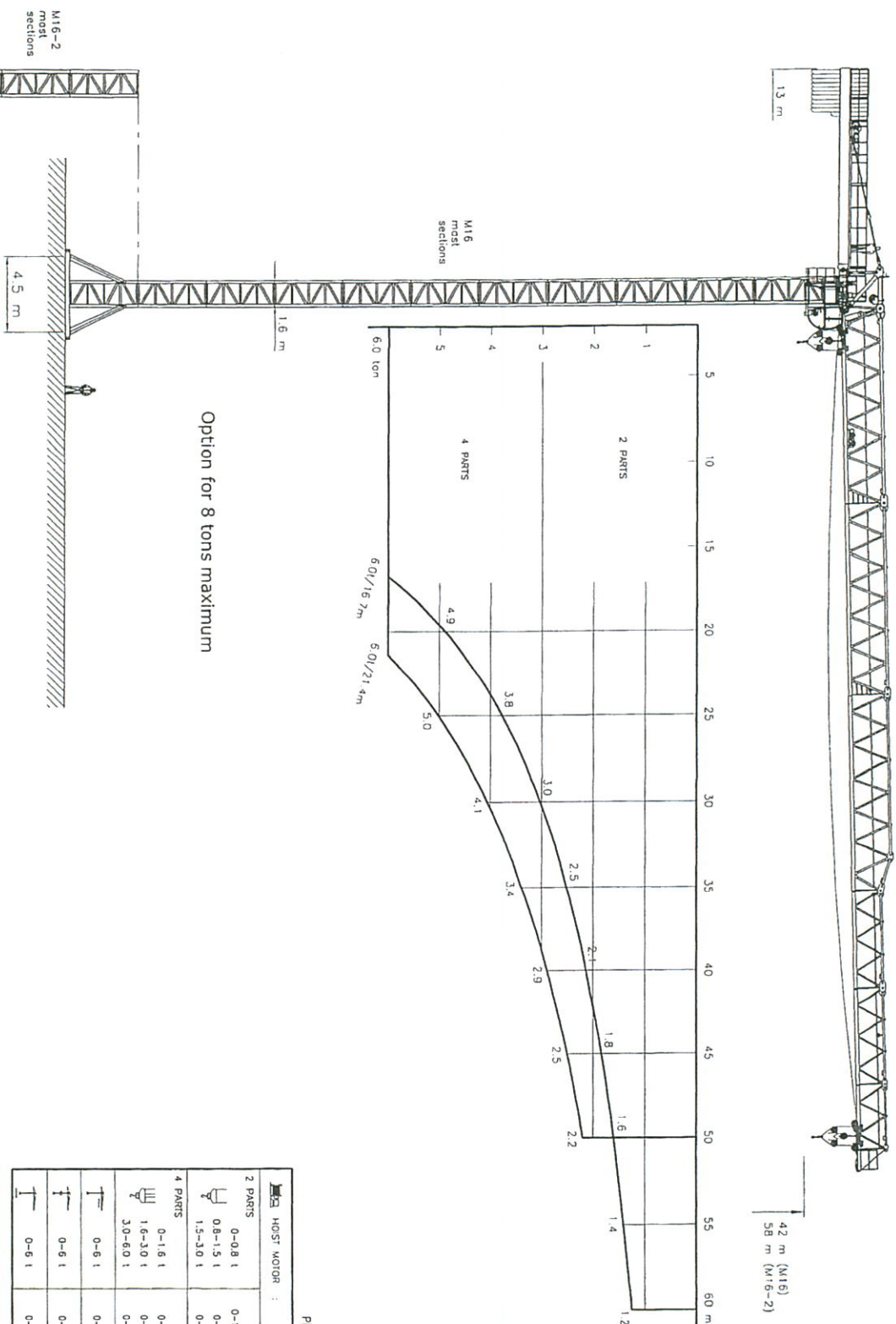


# Svenska Kran AB

## K130F



Option for 8 tons maximum

Mast height calculation based on EN 14439 zone C25  
(20 m/s wind in service, 45 m out of service)

### PERFORMANCE

HOIST MOTOR	22 kW
2 PARTS	
0-0.8 t	0-10.4 m/min
0.8-1.5 t	0-6.8 m/min
1.5-3.0 t	0-3.6 m/min
4 PARTS	
0-1.6 t	0-5.2 m/min
1.6-3.0 t	0-3.4 m/min
3.0-6.0 t	0-1.8 m/min
0-6 t	0-80 m/min
0-6 t	0-0.7 rpm
0-6 t	0-20 m/min

3 x 380-415 V	50-60 Hz	CONTROL VOLTAGE	110 V AC - 270 Hz
---------------	----------	-----------------	-------------------

MODEL	K130F
DESIGNER	Svenska Kran AB
MANUFACTURER	Svenska Kran AB
DATE	1-1-2015
REVISION	1
PROJECT	K130F
SCALE	1:1
DRAWN BY	...
CHECKED BY	...
APPROVED BY	...
DATE	...
PROJECT NO.	C1-00 00090872-00